



## AVAILABLE FOR LEASE

2720 BARTRAM ROAD, BRISTOL, PA

### HIGHLIGHTS

- 3,924 SF Office Space
- 20' Ceiling Height
- Docks: 2
- Drive-Ins: 2 (expandable)
- 550' Frontage on I-95
- \$38,386.77 (Est taxes)



**BUILDING SIZE**  
12,117 SF



**ACREAGE**  
Approximately 4.00 Acres



**ZONING**  
P-I - Planned Industrial

### CONTACTS



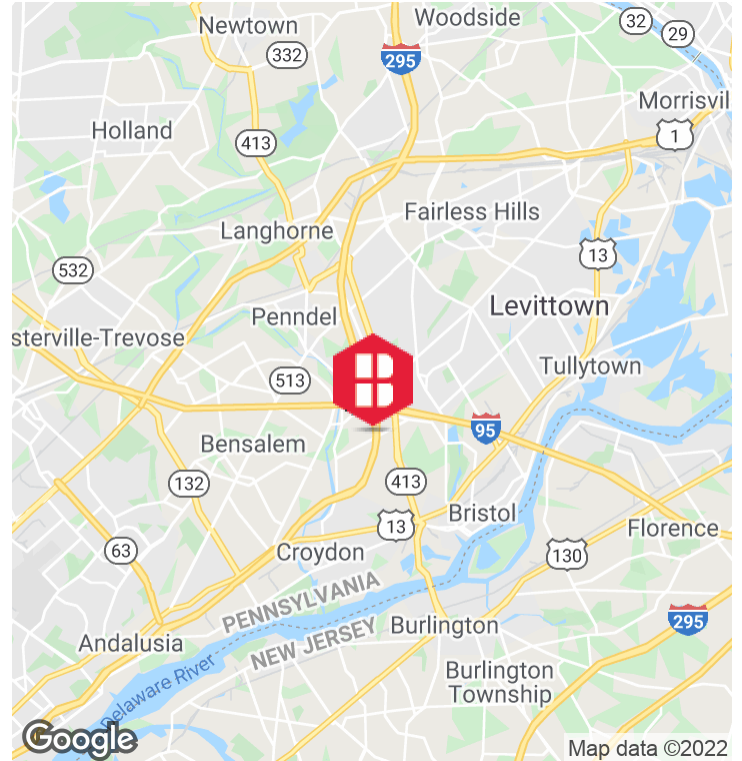
**Christopher Pennington**  
Binswanger  
Partner & Senior Vice President  
215.448.6053  
[cpennington@binswanger.com](mailto:cpennington@binswanger.com)

**Brian McDonagh**  
Venture One  
Vice President – Northeast Region  
201.605.9401  
[brianm@ventureonere.com](mailto:brianm@ventureonere.com)

Three Logan Square  
Philadelphia, PA 19103  
Phone: 215.448.6000  
[binswanger.com](http://binswanger.com)

The information contained herein is from sources deemed reliable, but no warranty or representation is made as to the accuracy thereof and no liability may be imposed.





**LOCATION DESCRIPTION**

Conveniently located in Bristol Township, this property is in close proximity to transportation arteries such as I-95 and the Pennsylvania Turnpike, which provide access to the entire Eastern Seaboard.

<b>DEMOGRAPHICS</b>	<b>1 MILE</b>	<b>3 MILES</b>	<b>5 MILES</b>
Total Households	3,196	35,518	90,665
Total Population	8,187	95,325	243,822
Average HH Income	\$59,228	\$68,234	\$70,469

**CONTACTS**

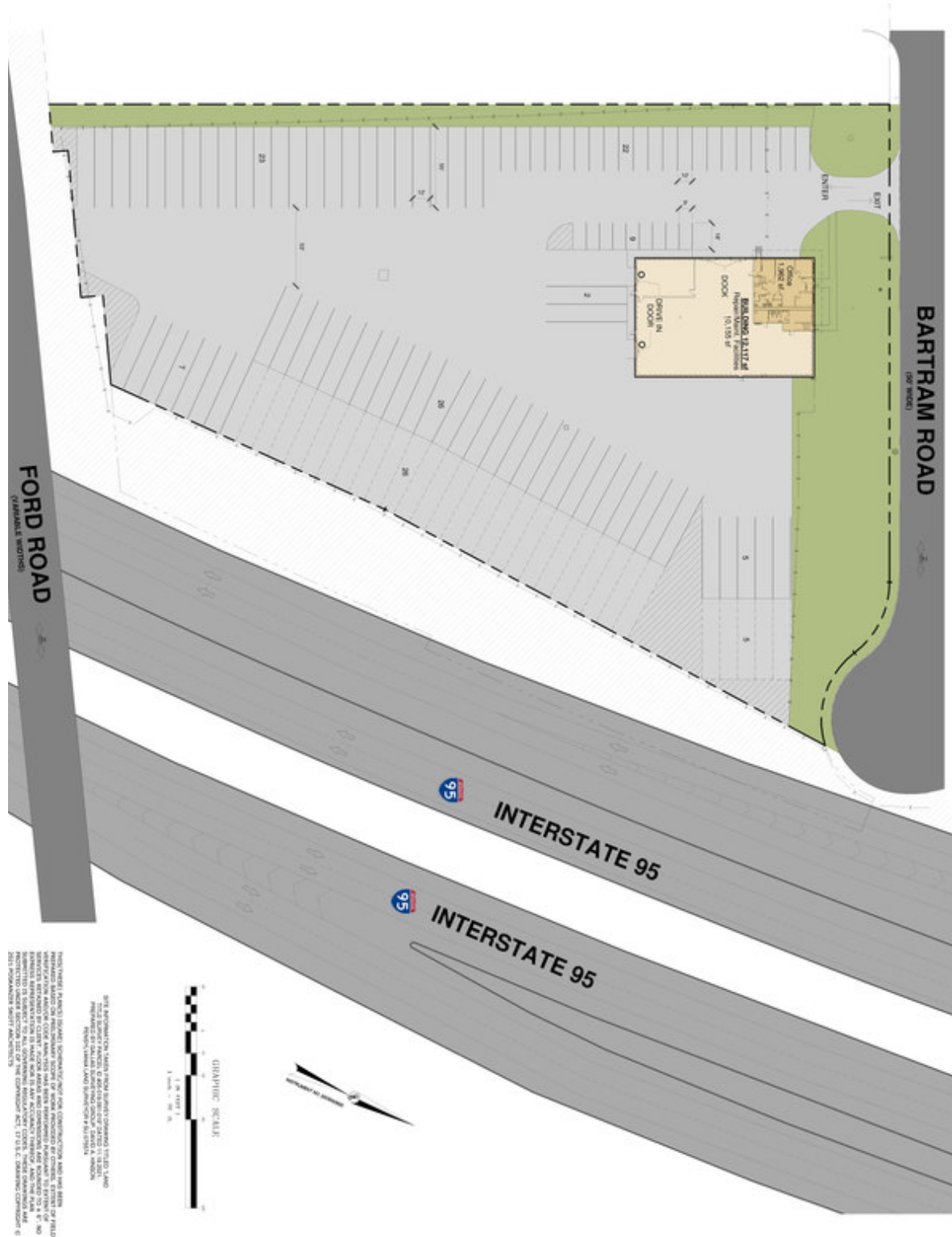


**Christopher Pennington**  
Binswanger  
Partner & Senior Vice President  
215.448.6053  
cpennington@binswanger.com

**Brian McDonagh**  
Venture One  
Vice President – Northeast Region  
201.605.9401  
brianm@ventureonere.com

Three Logan Square  
Philadelphia, PA 19103  
Phone: 215.448.6000  
binswanger.com

The information contained herein is from sources deemed reliable, but no warranty or representation is made as to the accuracy thereof and no liability may be imposed.



## CONTACTS



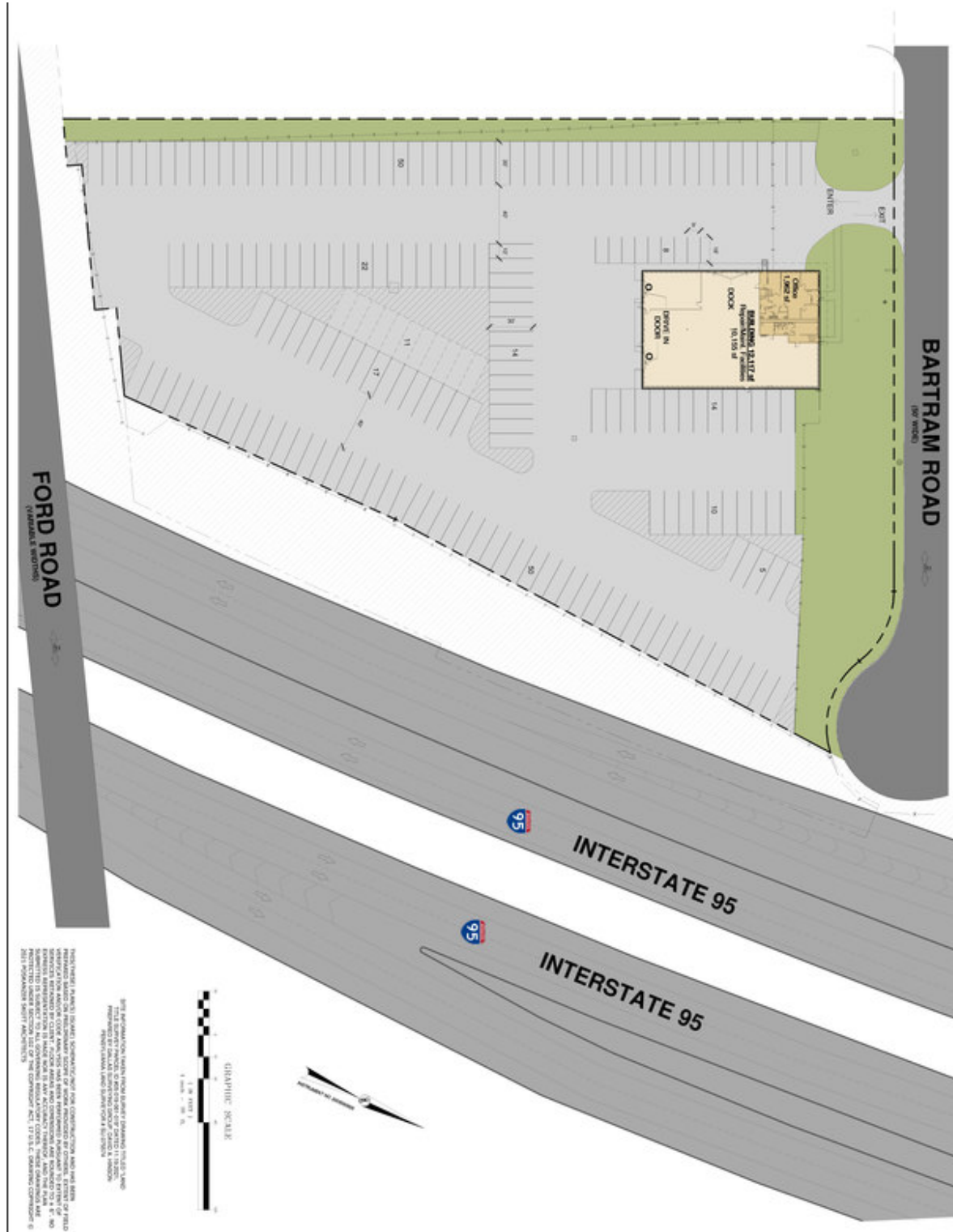
**Christopher Pennington**  
Binswanger  
Partner & Senior Vice President  
215.448.6053  
cpennington@binswanger.com

**Brian McDonagh**  
Venture One  
Vice President – Northeast Region  
201.605.9401  
briam@ventureonere.com

Three Logan Square  
Philadelphia, PA 19103  
Phone: 215.448.6000  
binswanger.com

The information contained herein is from sources deemed reliable, but no warranty or representation is made as to the accuracy thereof and no liability may be imposed.





**CONTACTS**



**Christopher Pennington**  
Binswanger  
Partner & Senior Vice President  
215.448.6053  
cpennington@binswanger.com

**Brian McDonagh**  
Venture One  
Vice President – Northeast Region  
201.605.9401  
briam@ventureonere.com

Three Logan Square  
Philadelphia, PA 19103  
Phone: 215.448.6000  
binswanger.com

The information contained herein is from sources deemed reliable, but no warranty or representation is made as to the accuracy thereof and no liability may be imposed.