

1540 S. Ashland Avenue

Chicago, IL 60608



9500 Bryn Mawr Suite 340
Rosemont, IL 60018
p: 847.325.4302

BUILDING AREAS (±SF)

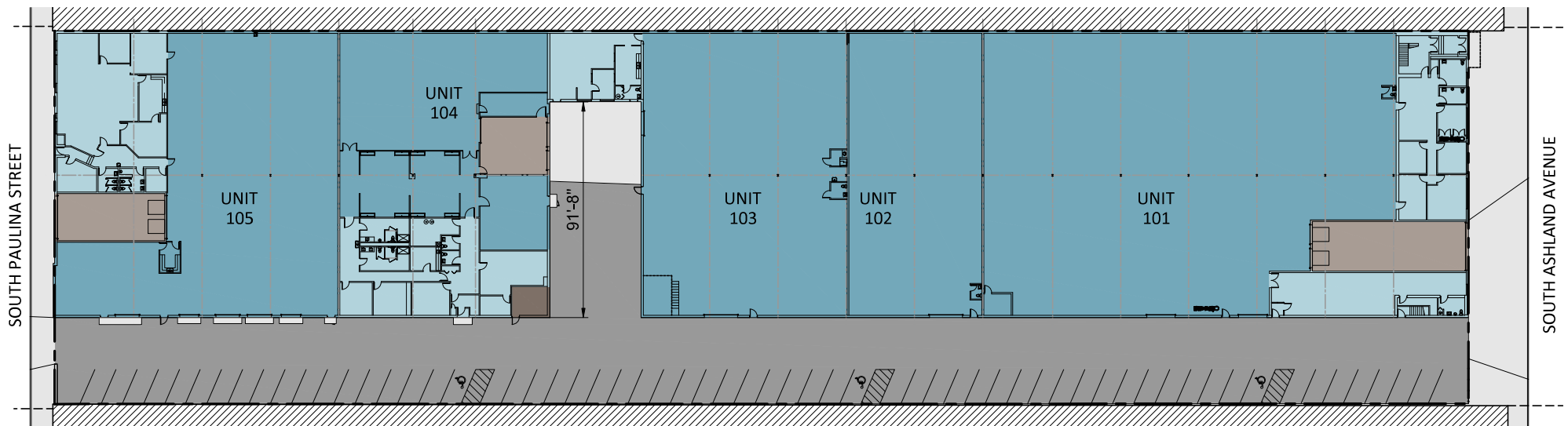
1 & 2 story multi-tenant office/whse	
UNIT 101 (1ST STORY)	25,216
UNIT 102	6,970
UNIT 103	11,880
UNIT 104	10,682
UNIT 105	14,677
UNIT 106 (2ND STORY)	3,744
total	73,169

PARKING INFO (SPACES)

standard	58
accessible	3
total	61

SHEET INDEX

SITE PLAN	MK1.0
1ST STORY BUILDING PLAN	MK1.1
2ND STORY BUILDING PLAN	MK1.2
UNIT 101	MK1.3-1.4
UNIT 102	MK1.5
UNIT 103	MK1.6-1.7
UNIT 104	MK1.8-1.9
UNIT 105	MK1.10-1.11
UNIT 106	MK1.12



0 20 40 60 80
scale: 1/64" = 1'-0"

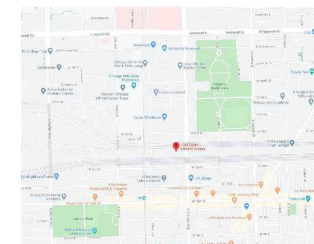
SITE PLAN



legend

existing walls

THIS(THESE) PLAN(S) IS(ARE) SCHEMATIC/NOT FOR CONSTRUCTION AND HAS BEEN PREPARED BASED ON PRELIMINARY SCOPE OF WORK PROVIDED BY OTHERS. EXTENT OF FIELD VERIFICATION AND/OR CODE ANALYSIS HAS BEEN PERFORMED PURSUANT TO EXTENT OF SERVICES RETAINED BY CLIENT. FLOOR AREAS AND DIMENSIONS ARE ROUNDED TO ± 6". NO EXPRESS REPRESENTATION IS MADE NOR IS ANY TO BE IMPLIED AS TO THE ACCURACY THEREOF, AND THE PLAN SUBMITTED IS SUBJECT TO ALL GOVERNING REGULATORY CODES. THESE DRAWINGS ARE PROTECTED UNDER SECTION 102 OF THE COPYRIGHT ACT, 17 U.S.C. DRAWING COPYRIGHT © 2023 DESIGNHAUS, INC.



PREPARED BY:

designhaus^{inc}
architecture

860 lively boulevard elk grove village, illinois 60007
p: 847.593.5010 f: 847.593.5012 www.dhausarch.com

proj: 20.055
date: 01.30.23
rev: 08

MK1.0

1540 S. Ashland Avenue

Chicago, IL 60608

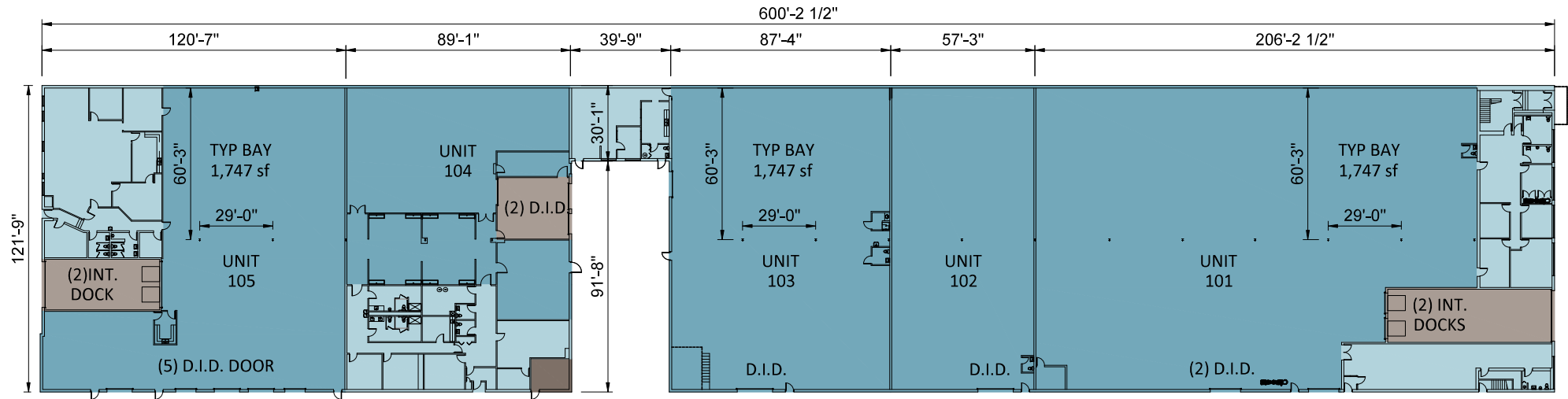


9500 Bryn Mawr Suite 340
Rosemont, IL 60018
p: 847.325.4302

BUILDING AREAS (±SF)

1 & 2 story multi-tenant office/whse

UNIT 101		UNIT 102		UNIT 103	
office	4,157	warehouse	6,970	office	1,197
warehouse	21,059			warehouse	10,683
total	25,216	total	6,970	total	11,880
UNIT 104		UNIT 105		UNIT 106	
office	3,196	office	3,304	office	3,744
warehouse	7,486	warehouse	11,373		
total	10,682	total	14,677	total	3,744



0 30 60
scale: 1" = 60'-0"

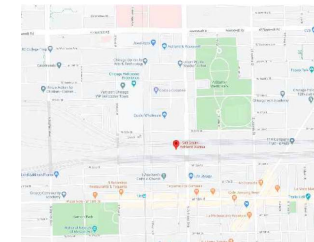
1ST STORY BUILDING PLAN



legend

existing walls

THIS(THESE) PLAN(S) IS(ARE) SCHEMATIC/NOT FOR CONSTRUCTION AND HAS BEEN PREPARED BASED ON PRELIMINARY SCOPE OF WORK PROVIDED BY OTHERS. EXTENT OF FIELD VERIFICATION AND/OR CODE ANALYSIS HAS BEEN PERFORMED PURSUANT TO EXTENT OF SERVICES RETAINED BY CLIENT. FLOOR AREAS AND DIMENSIONS ARE ROUNDED TO ± 6". NO EXPRESS REPRESENTATION IS MADE NOR IS ANY TO BE IMPLIED AS TO THE ACCURACY THEREOF, AND THE PLAN SUBMITTED IS SUBJECT TO ALL GOVERNING REGULATORY CODES. THESE DRAWINGS ARE PROTECTED UNDER SECTION 102 OF THE COPYRIGHT ACT, 17 U.S.C. DRAWING COPYRIGHT © 2023 DESIGNHAUS, INC.



PREPARED BY:

designhaus_{inc}
architecture

860 lively boulevard elk grove village, illinois 60007
p: 847.593.5010 f: 847.593.5012 www.dhausarch.com

proj: 20.055
date: 01.30.23
rev: 08

MK1.1

1540 S. Ashland Avenue

Chicago, IL 60608

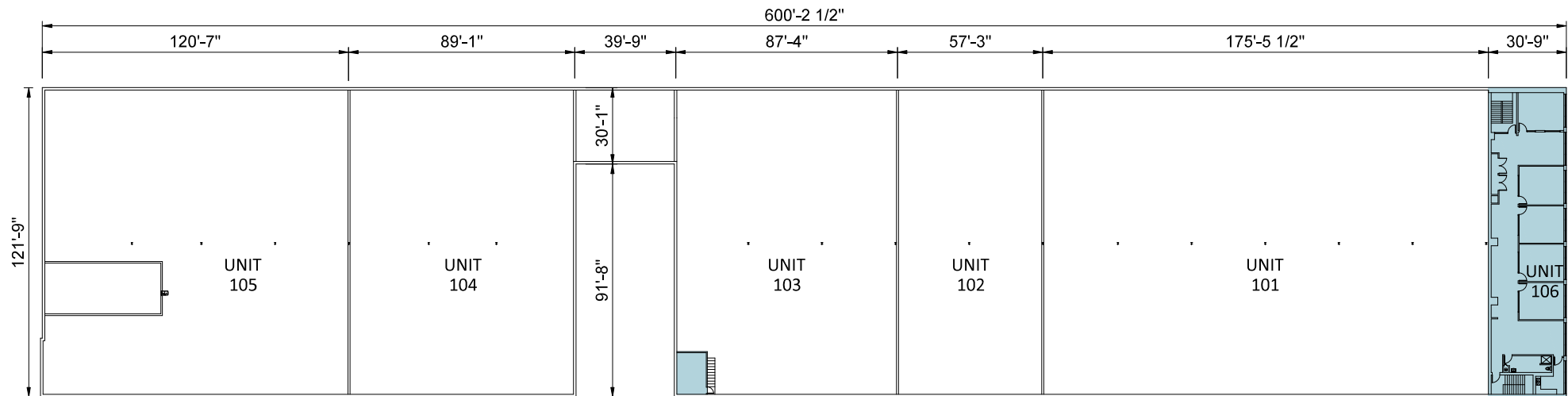


9500 Bryn Mawr Suite 340
Rosemont, IL 60018
p: 847.325.4302

BUILDING AREAS (±SF)

1 & 2 story multi-tenant office/whse

UNIT 101		UNIT 102		UNIT 103	
office	4,157	warehouse	6,970	office	1,197
warehouse	21,059			warehouse	10,683
total	25,216	total	6,970	total	11,880
UNIT 104		UNIT 105		UNIT 106	
office	3,196	office	3,304	office	3,744
warehouse	7,486	warehouse	11,373		
total	10,682	total	14,677	total	3,744



0 30 60
scale: 1" = 60'-0"

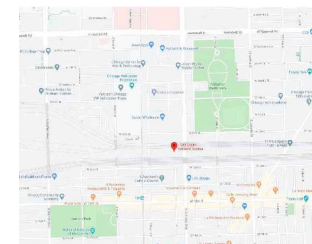
2ND STORY BUILDING PLAN



legend

existing walls

THIS(THESE) PLAN(S) IS(ARE) SCHEMATIC/NOT FOR CONSTRUCTION AND HAS BEEN PREPARED BASED ON PRELIMINARY SCOPE OF WORK PROVIDED BY OTHERS. EXTENT OF FIELD VERIFICATION AND/OR CODE ANALYSIS HAS BEEN PERFORMED PURSUANT TO EXTENT OF SERVICES RETAINED BY CLIENT. FLOOR AREAS AND DIMENSIONS ARE ROUNDED TO ± 6". NO EXPRESS REPRESENTATION IS MADE NOR IS ANY TO BE IMPLIED AS TO THE ACCURACY THEREOF, AND THE PLAN SUBMITTED IS SUBJECT TO ALL GOVERNING REGULATORY CODES. THESE DRAWINGS ARE PROTECTED UNDER SECTION 102 OF THE COPYRIGHT ACT, 17 U.S.C. DRAWING COPYRIGHT © 2023 DESIGNHAUS, INC.



PREPARED BY:

designhaus^{inc}
architecture

860 lively boulevard elk grove village, illinois 60007
p: 847.593.5010 f: 847.593.5012 www.dhausarch.com

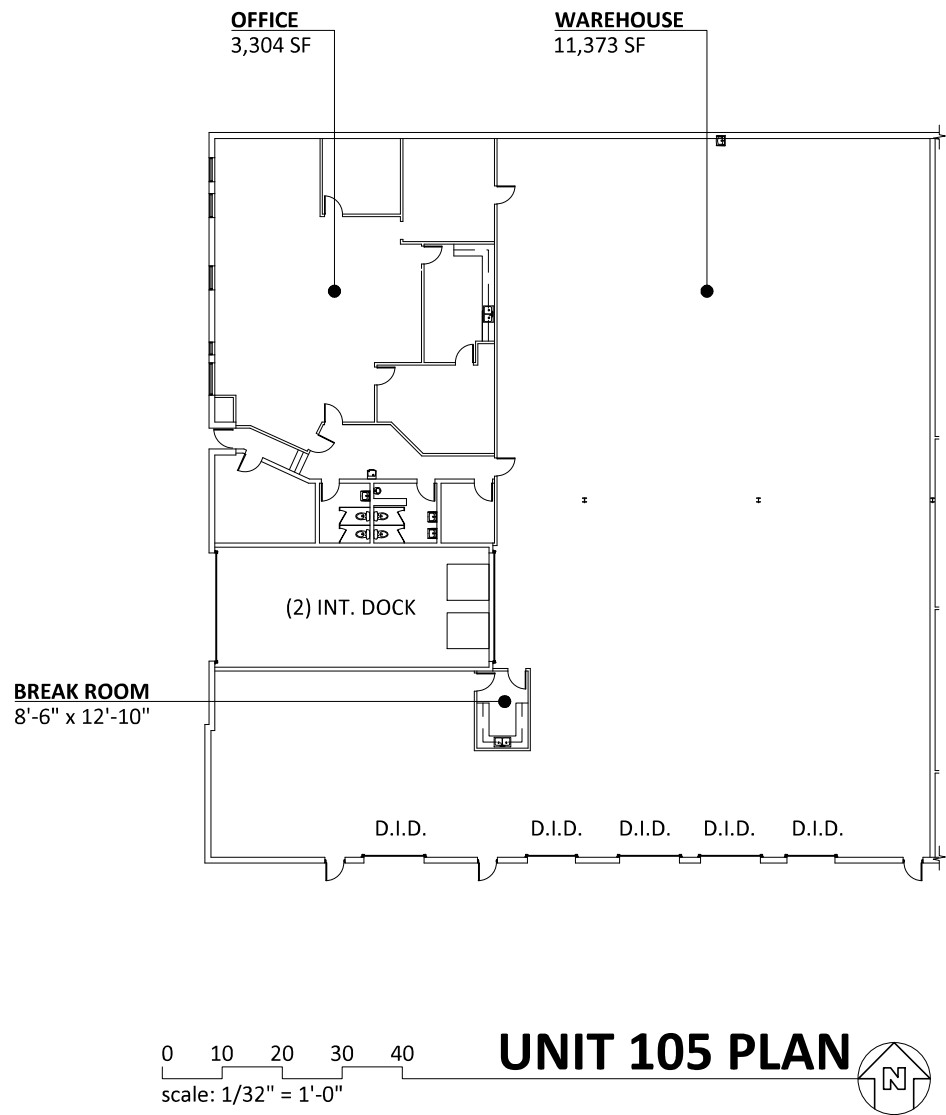
proj: 20.055
date: 01.30.23
rev: 08

MK1.2

1540 S. Ashland Avenue
Chicago, IL 60608

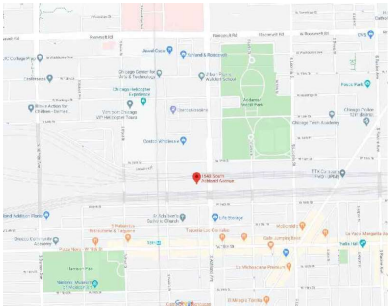
VENTURE ONE
REAL ESTATE
9500 Bryn Mawr Suite 340
Rosemont, IL 60018
p: 847.325.4302

BUILDING AREAS (±SF)	
1 & 2 story multi-tenant office/whse	
UNIT 105	
office	3,304
warehouse	11,373
total	14,677
drive-in doors	5
int. dock	2



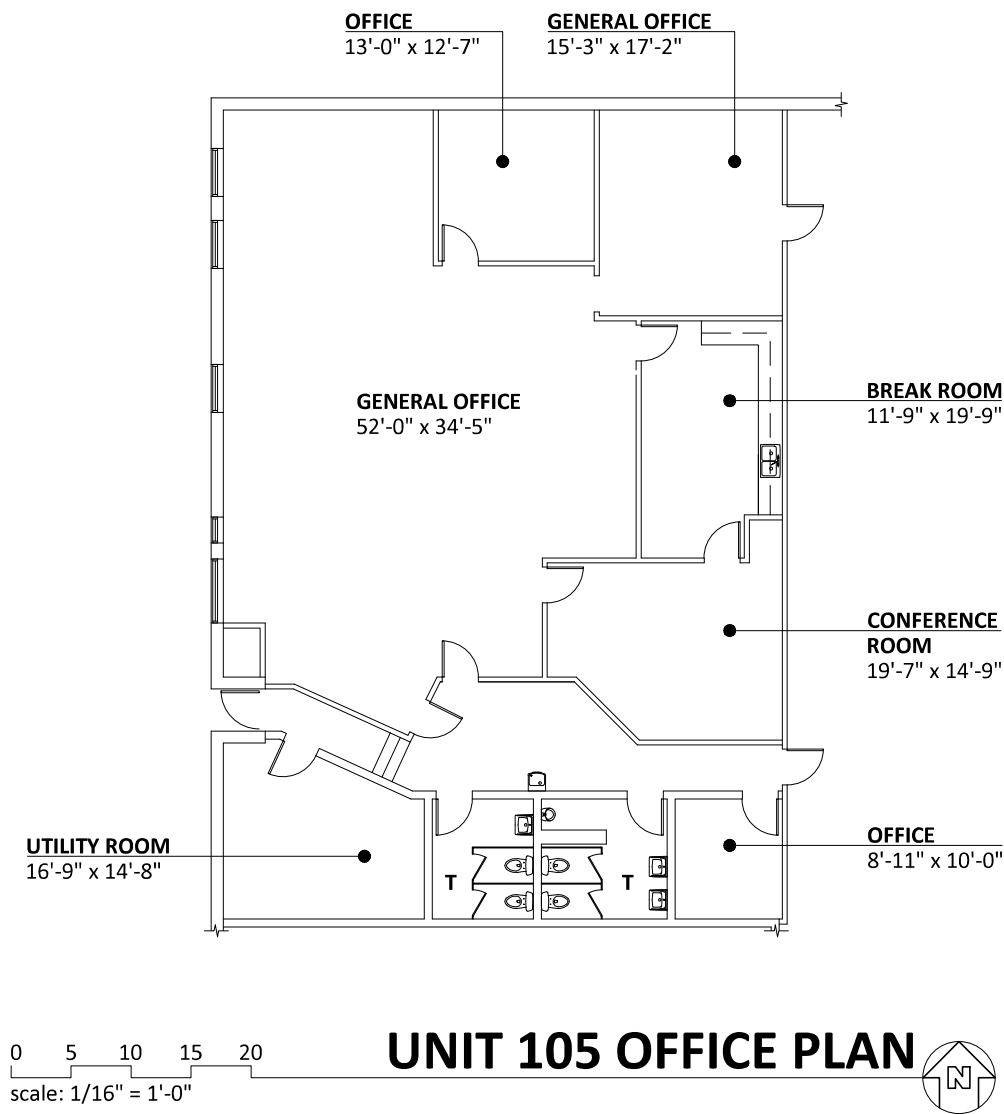
legend
existing walls

THIS(THESE) PLAN(S) IS(ARE) SCHEMATIC/NOT FOR CONSTRUCTION AND HAS BEEN PREPARED BASED ON PRELIMINARY SCOPE OF WORK PROVIDED BY OTHERS. EXTENT OF FIELD VERIFICATION AND/OR CODE ANALYSIS HAS BEEN PERFORMED PURSUANT TO EXTENT OF SERVICES RETAINED BY CLIENT. FLOOR AREAS AND DIMENSIONS ARE ROUNDED TO ± 6". NO EXPRESS REPRESENTATION IS MADE NOR IS ANY TO BE IMPLIED AS TO THE ACCURACY THEREOF, AND THE PLAN SUBMITTED IS SUBJECT TO ALL GOVERNING REGULATORY CODES. THESE DRAWINGS ARE PROTECTED UNDER SECTION 102 OF THE COPYRIGHT ACT, 17 U.S.C. DRAWING COPYRIGHT © 2023 DESIGNHAUS, INC.



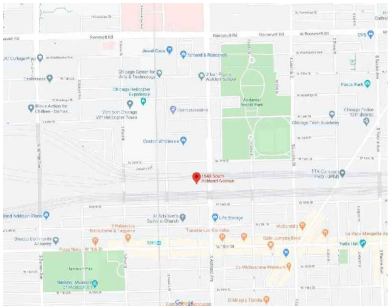
PREPARED BY:
designhaus
architecture
860 lively boulevard elk grove village, illinois 60007
p: 847.593.5010 f: 847.593.5012 www.dhausarch.com
proj: 20.055
date: 01.30.23
rev: 08 **MK1.10**

BUILDING AREAS (±SF)	
1 & 2 story multi-tenant office/whse	
UNIT 105	
office	3,304
warehouse	11,373
total	14,677
drive-in doors	5
int. dock	2



legend
existing walls

THIS(THESE) PLAN(S) IS(ARE) SCHEMATIC/NOT FOR CONSTRUCTION AND HAS BEEN PREPARED BASED ON PRELIMINARY SCOPE OF WORK PROVIDED BY OTHERS. EXTENT OF FIELD VERIFICATION AND/OR CODE ANALYSIS HAS BEEN PERFORMED PURSUANT TO EXTENT OF SERVICES RETAINED BY CLIENT. FLOOR AREAS AND DIMENSIONS ARE ROUNDED TO ± 6". NO EXPRESS REPRESENTATION IS MADE NOR IS ANY TO BE IMPLIED AS TO THE ACCURACY THEREOF, AND THE PLAN SUBMITTED IS SUBJECT TO ALL GOVERNING REGULATORY CODES. THESE DRAWINGS ARE PROTECTED UNDER SECTION 102 OF THE COPYRIGHT ACT, 17 U.S.C. DRAWING COPYRIGHT © 2023 DESIGNHAUS, INC.



PREPARED BY:
designhaus^{inc}
architecture
860 lively boulevard elk grove village, illinois 60007
p: 847.593.5010 f: 847.593.5012 www.dhausarch.com
proj: 20.055
date: 01.30.23
rev: 08 **MK1.11**