

VenturePark Beachline

7650 AMSTERDAM DRIVE, ORLANDO, FLORIDA | WWW.VENTUREPARKBEACHLINE.COM



[CLICK HERE TO VIEW
PROPERTY WEBSITE](#)



[CLICK HERE TO VIEW
MARKETING VIDEO](#)

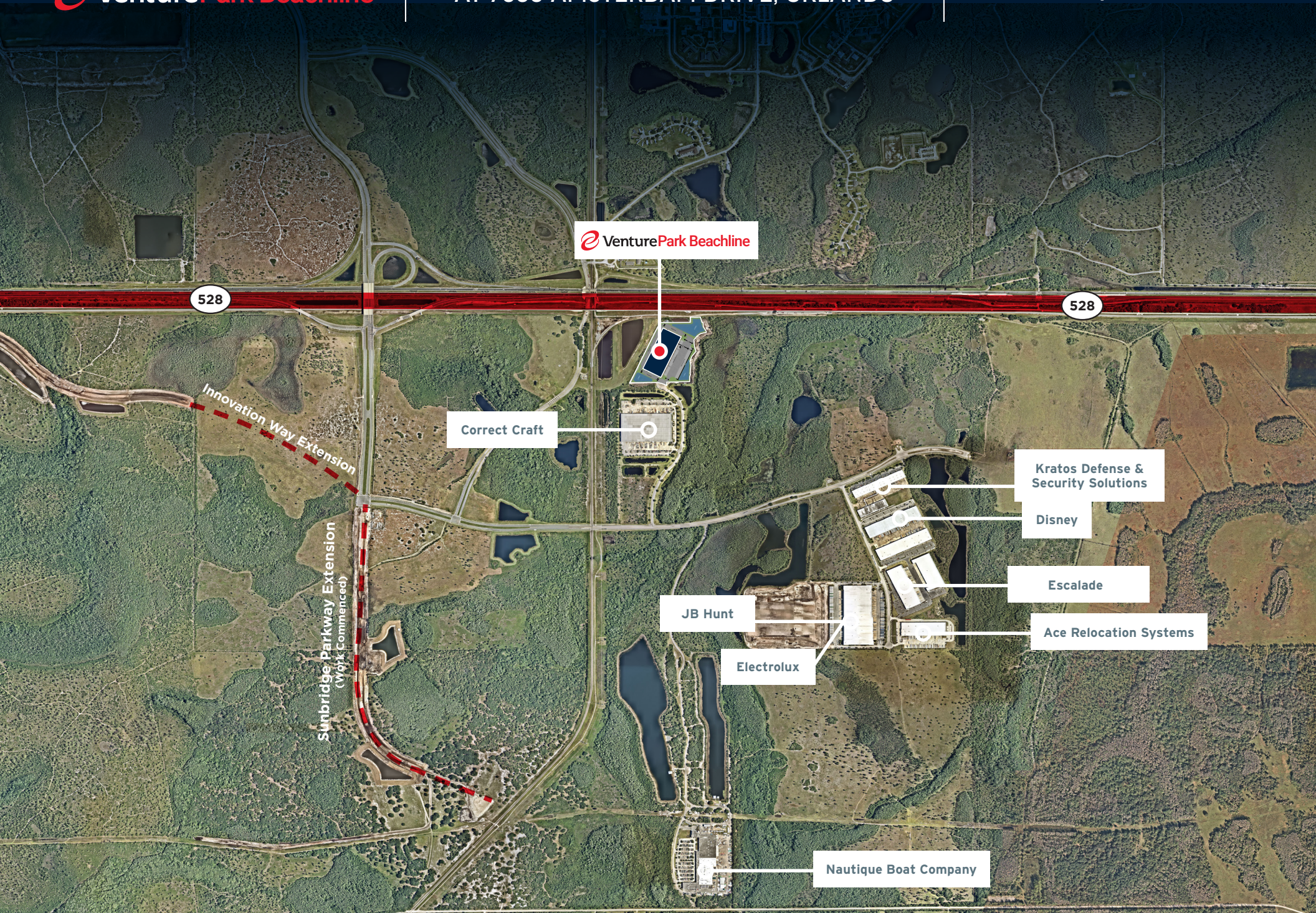
220,853 SF ORLANDO INDUSTRIAL LOGISTICS CENTER FOR LEASE | AVAILABLE Q3 2023



HIGHLIGHTS

ADDRESS	7650 Amsterdam Dr. Orlando, FL 32832
SQUARE FOOTAGE	220,853 SF
SITE SIZE	16.7 Acres
CLEAR HEIGHT	36'
DOCKS	35 (9' x 10')
DRIVE-INS	2 (12' x 14')
PARKING RATIO	1.1/1,000 SF
TRAILER STALLS	53 Stalls
COLUMN SPACING	56' x 50' Typical 60' Speed Bay
BUILDING DIMENSIONS	308' x 709'
TRUCK COURT	175'
FIRE SUPPRESSION	ESFR
POWER	2,000 Amps (3-Phase)
ANTICIPATED DELIVERY	Q3 2023





 **VenturePark Beachline**

528

528

Innovation Way Extension

Sunbridge Parkway Extension
(Work Commenced)

Correct Craft

JB Hunt

Electrolux

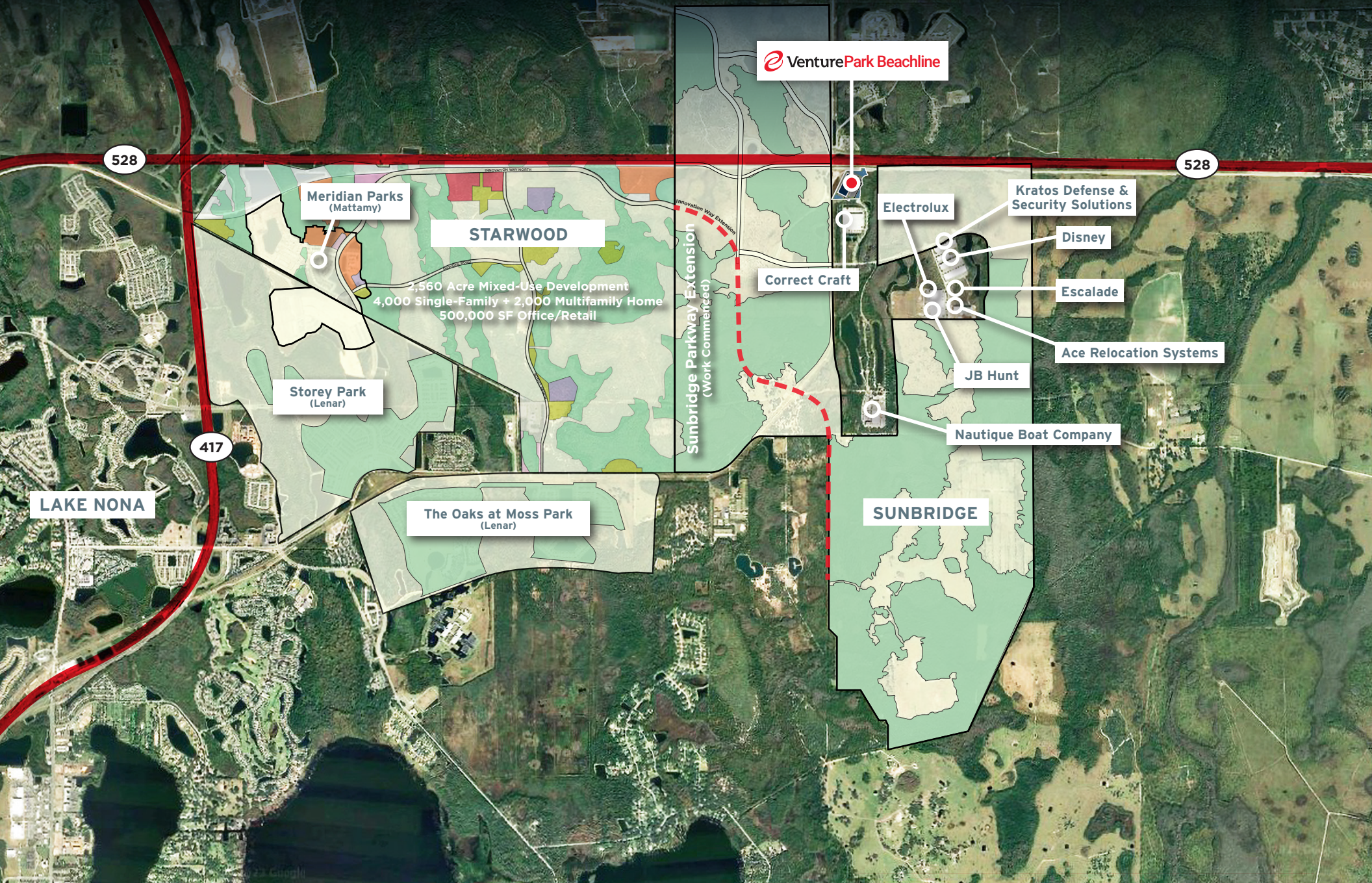
Nautique Boat Company

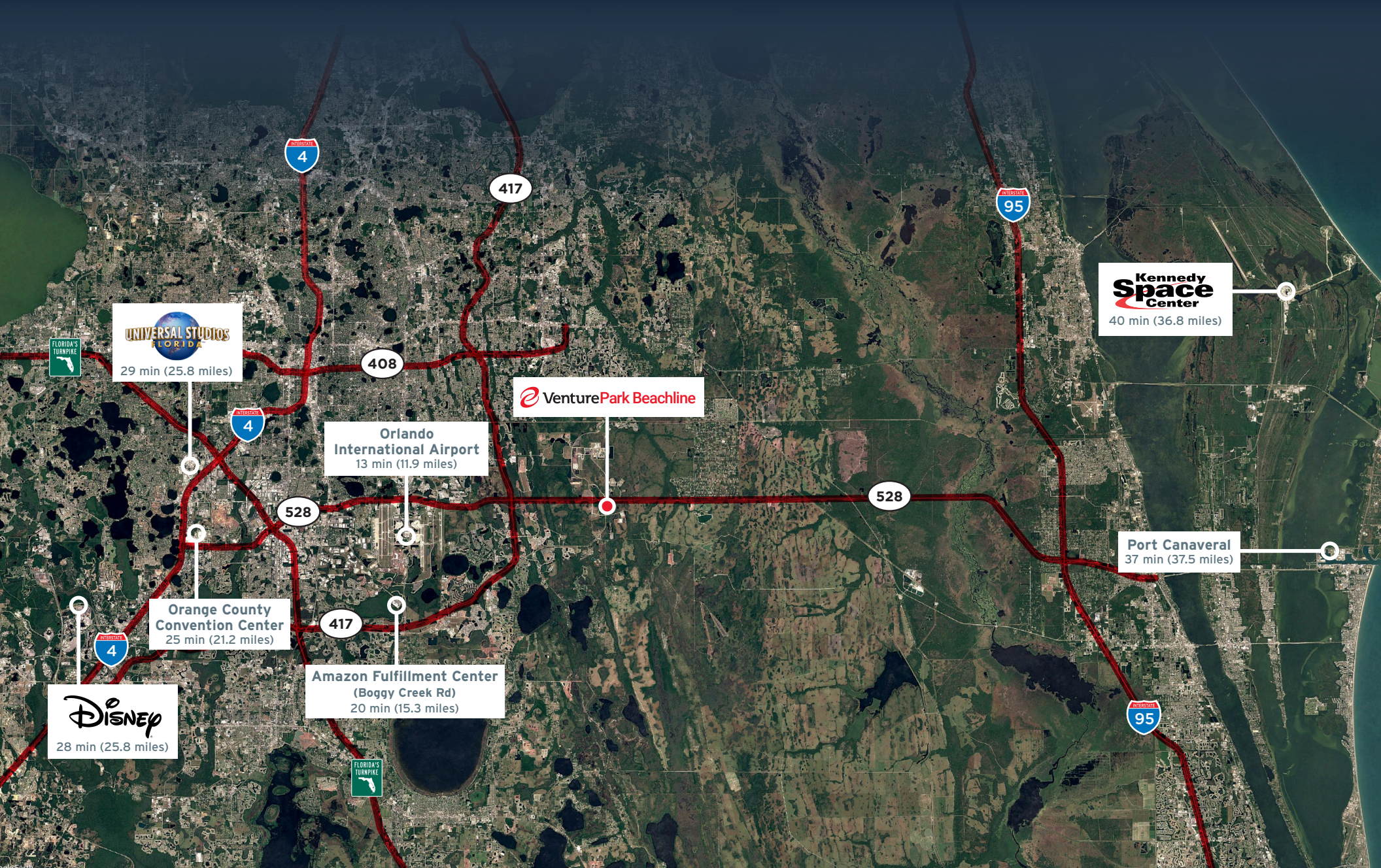
Kratos Defense &
Security Solutions

Disney

Escalade

Ace Relocation Systems





**Kennedy
Space
Center**
40 min (36.8 miles)

Port Canaveral
37 min (37.5 miles)

**Orlando
International Airport**
13 min (11.9 miles)

**Orange County
Convention Center**
25 min (21.2 miles)

**Amazon Fulfillment Center
(Boggy Creek Rd)**
20 min (15.3 miles)

**UNIVERSAL STUDIOS
FLORIDA**
29 min (25.8 miles)

Disney
28 min (25.8 miles)

 **VenturePark Beachline**

FOR LEASING INFORMATION, PLEASE CONTACT:



Jared Bonshire
Executive Managing Director
(t) +1 407 541 4414
jared.bonshire@cushwake.com



David Perez
Executive Managing Director
(t) +1 407 541 4435
david.perez@cushwake.com



Taylor Zambito
Director
(t) +1 407 541 4409
taylor.zambito@cushwake.com