

FOR LEASE OR SALE
28,952 SF

Mulcrone & Associates, Inc.

WOOD DALE, IL

725 EDGEWOOD AVENUE

LEASE RATE
Subject To Offer

COMMENTS

- Q3 2024 Availability
- Small Yard Space
- Close Proximity to O'Hare, I-90, I-290, I-294, & IL-390
- Located within Established Industrial Park
- Dynamic Office Layout
- Low DuPage County Taxes
- Functioning Single-Tenant Building
- Strong Surrounding Labor Pool
- Professionally Owned and Managed

BUILDING DETAILS

Building Size	28,952 SF
Office Size	2,771 SF
Clear Height	19'
Loading	2 Interior Loading Doors 2 Drive-in Door
Power	400-Amp, 120/140-Volt Service Additional Power Available Upon Request
Parking	23 Spaces
Sprinkler	Wet System

Brokered by:

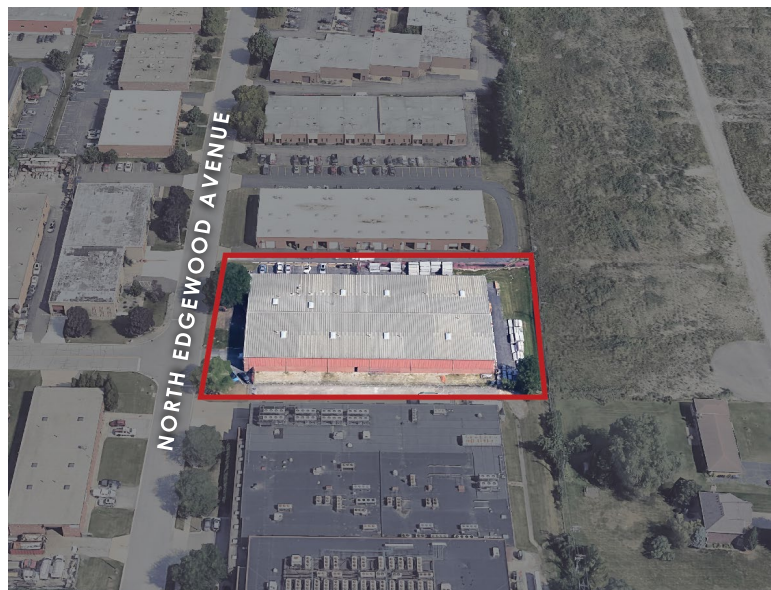
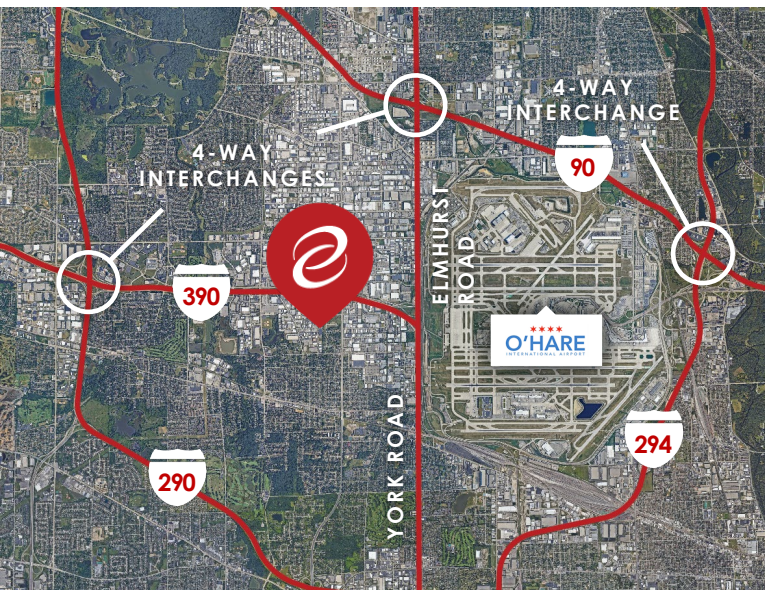
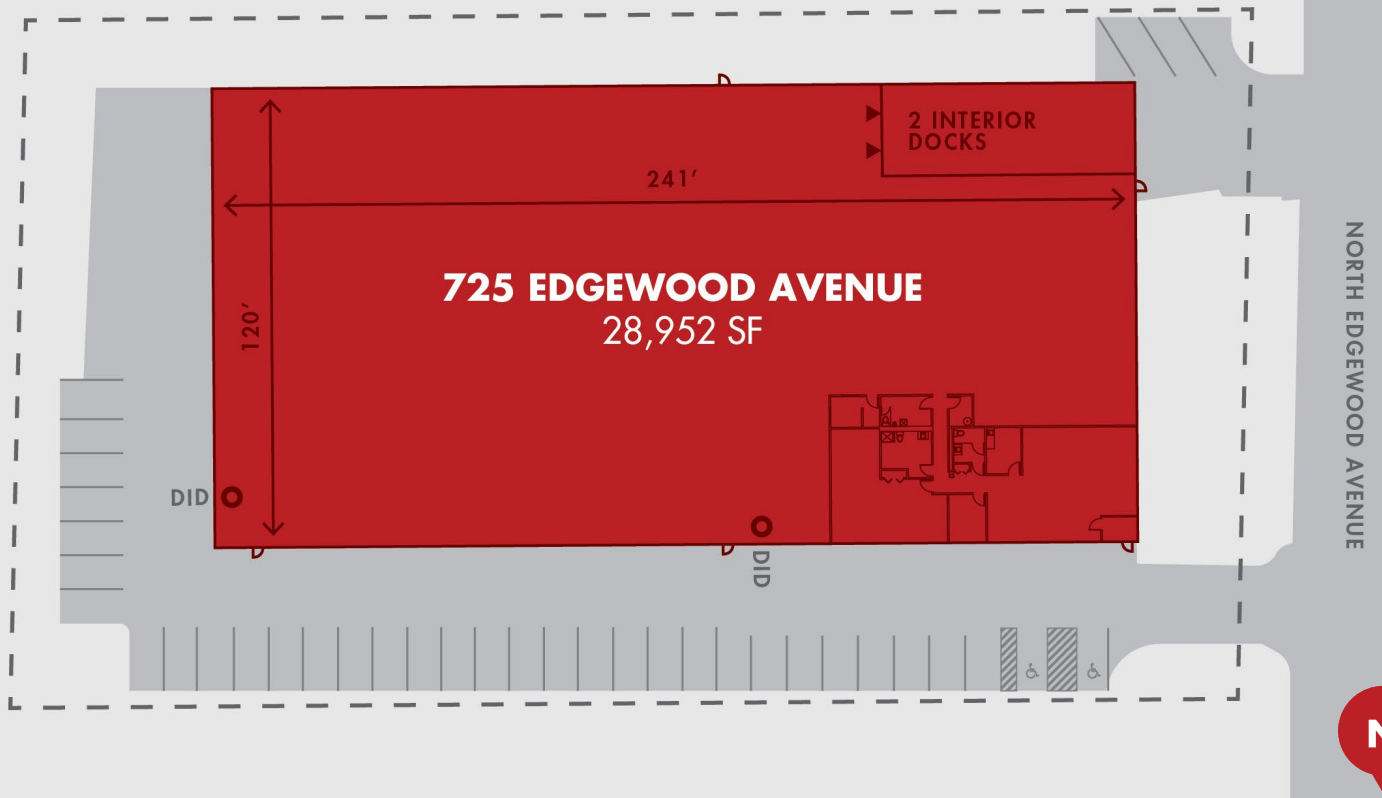
NAI Hiffman

Owned & Managed by:

VentureOne

FOR LEASE OR SALE

28,952 SF



JOE BRONSON

NAI Hiffman
jbronson@hiffman.com
630-317-0725

PADDY DWYER

NAI Hiffman
pdwyer@hiffman.com
630-317-0794

MATT KNOFF

Venture One Real Estate
MattK@VentureOneRE.com
612-462-4859

